

MEADOW CLASSROOM

Option 1 - Premier

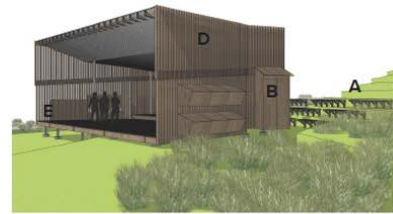
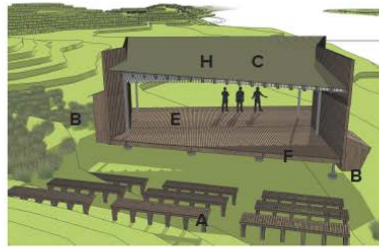
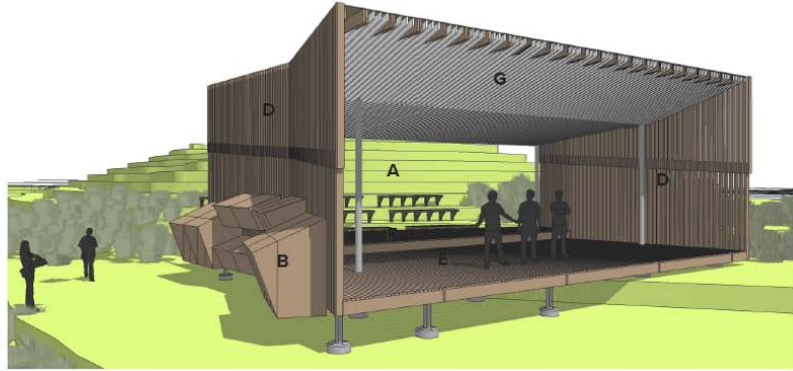
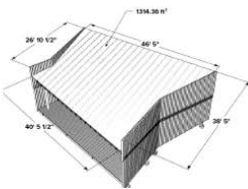
- Design Components

- A. Outdoor Auditorium
- B. Modular Lockable Storage
- C. Standing Seam Roof
- D. Wood Screen Walls
- E. Lower Concert Platform
- F. Upper Classroom Platform
- G. Acoustic Ceiling
- H. Solar Array at roof, connected to grid.

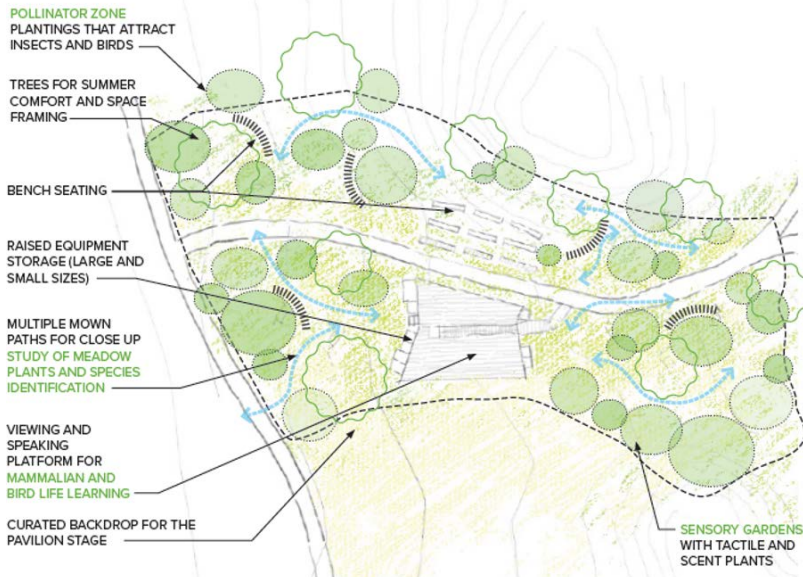
- Materiality

- » Kebony Wood or approved equal
- » Painted Steel Columns
- » Wood Benches

*See Appendix for additional detail.



THE HIVE - A BUZZ WITH ACTIVITY - A CENTERPIECE FOR LARGE GROUP LEARNING. MULTIPLE PATHS LEAD TO THE HIVE. A CURATED SPACE FOR COLLECTING TEAMS AT THE START OR END OF DAY. A RAISED PLATFORM FOR SPEAKERS. A FRAMED VIEW LOOKING SOUTH, TO ORIENT VISITORS TO THE MENTAL MAP OF THE PARK.



FLOAT CLASSROOM

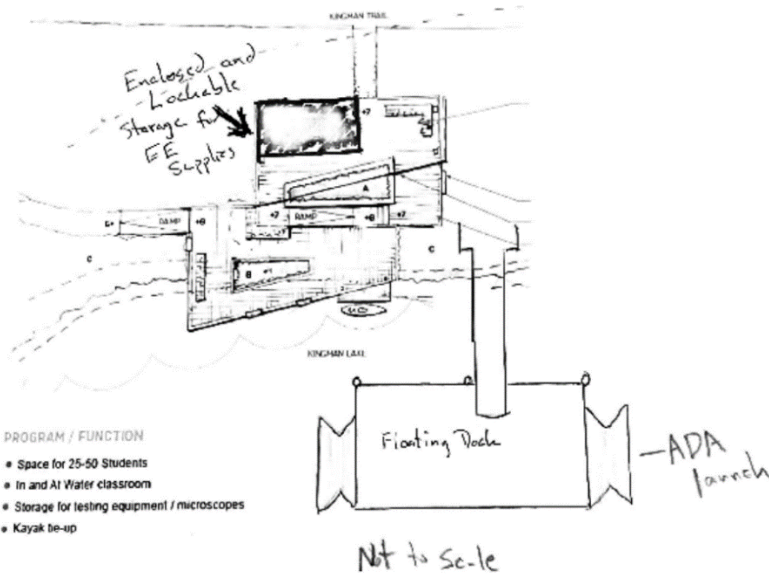
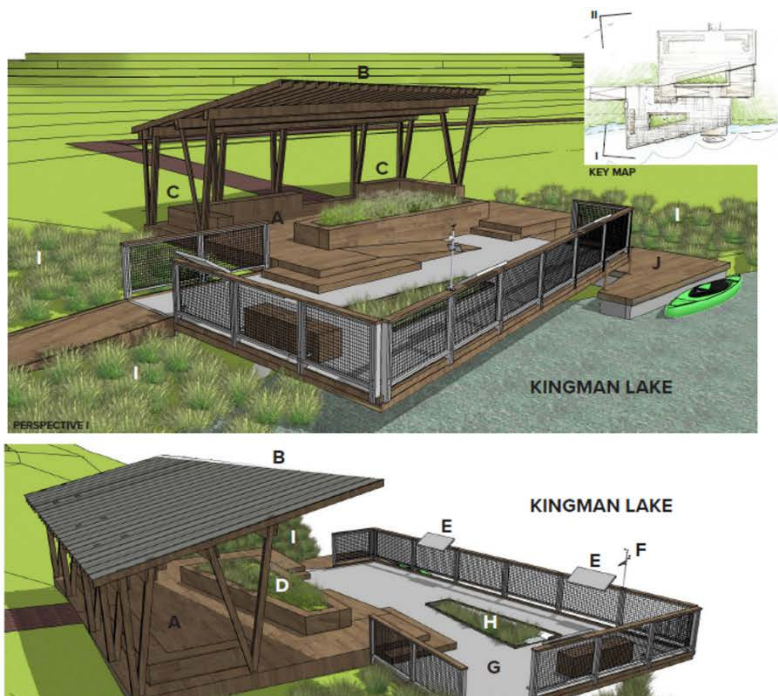
Option 1 - Premier

Design Components

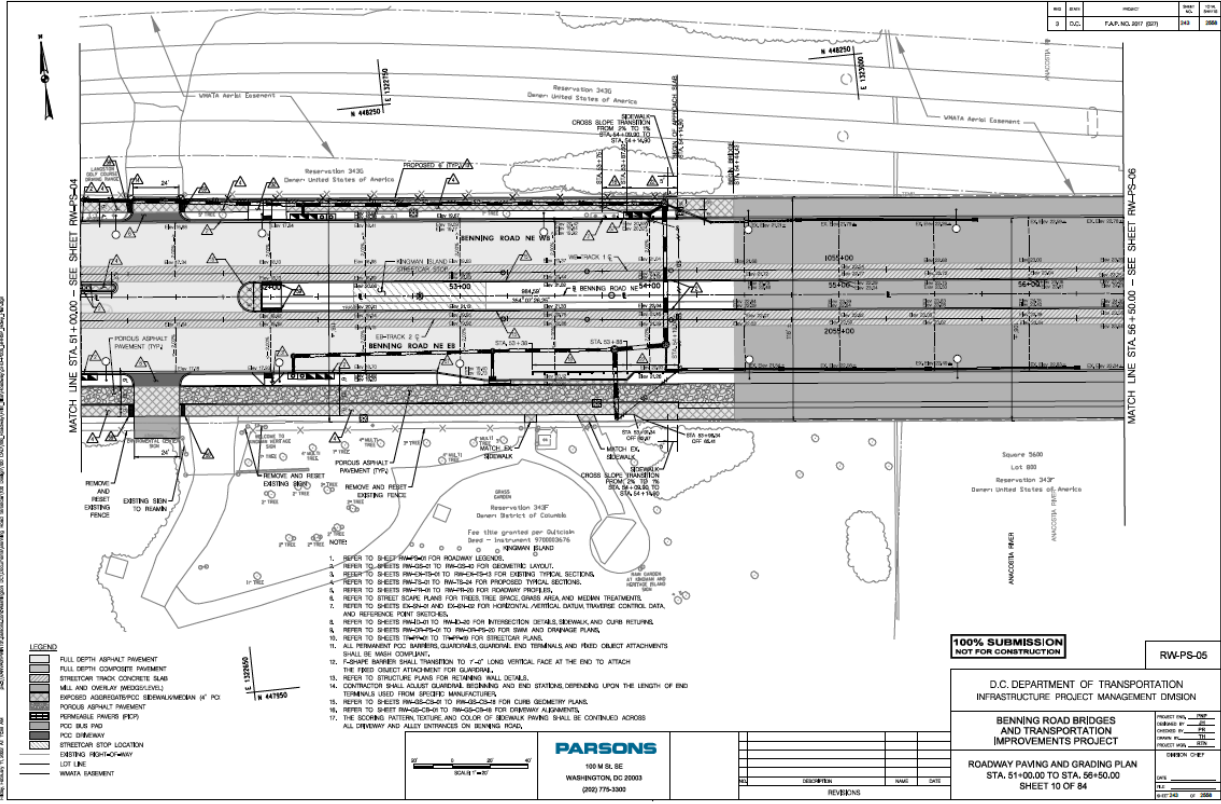
- A. Upper Wood Classroom
- B. Wooden Canopy
- C. Seating with Integrated Storage
- D. Raised Study Garden
- E. Educational Signage
- F. Weather Sensor
- G. Cantilevered Metal Kingman Lake Deck
- H. Wetland Planter
- I. Area to be Coordinated with Eco Team to Enhance with Native Plant Species
- J. Wood Dock

Materiality

- » Kebony Wood (or approved equal)
- » ADA Metal Flooring
- » Standing Seam Metal Roofing



Concept for Floating Lab Classroom 2021



DDOT Benning/295 interchange 100% designs. Note: will result in 22' protected bike and pedestrian lanes along conservation area border.



DOEE soft Benning entranceway concept

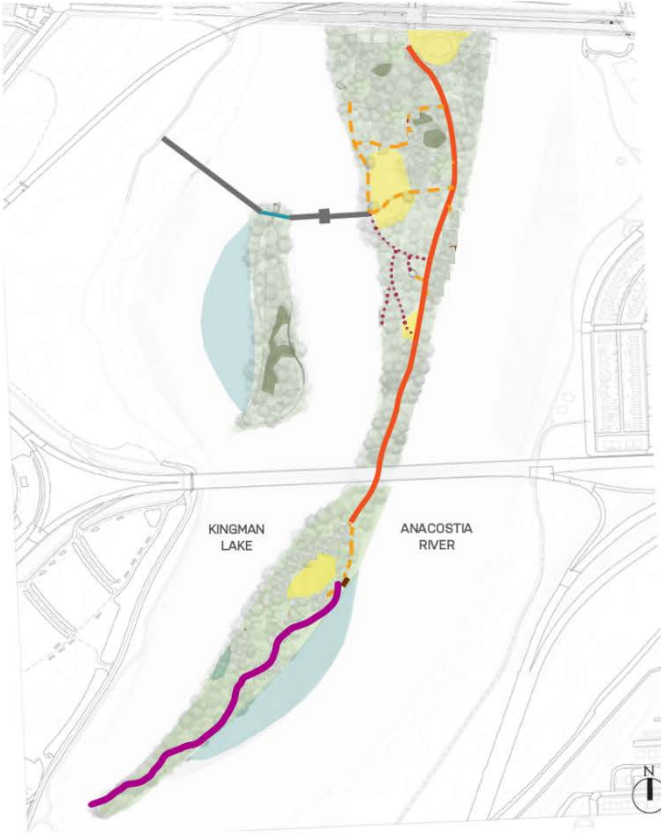


Jug Bay marsh overlook concept



Jug bay tower concept

ACCESSIBLE CONNECTION OF ECOSYSTEMS



LEGEND

- PRIMARY ADA PATH - 8' WIDE
- - - SECONDARY ADA PATH - 6' WIDE
- · · TERTIARY PATH - NON-ADA PATH - 4' WIDE
- ADA ACCESSIBLE RAISED BOARDWALK / CANOPY WALK
- BRIDGE - NON-ADA PATH (NOT IN SCOPE)
- NORTHERN HERITAGE BRIDGE CONNECTION
- HERITAGE ISLAND TERTIARY PATH - 4' WIDE
- HERITAGE ISLAND BOARDWALK (PHASE II)
- UPLAND DRY MEADOW
- VERNAL POOL
- FLOODPLAIN FOREST
- TIDAL FRESHWATER WETLANDS